

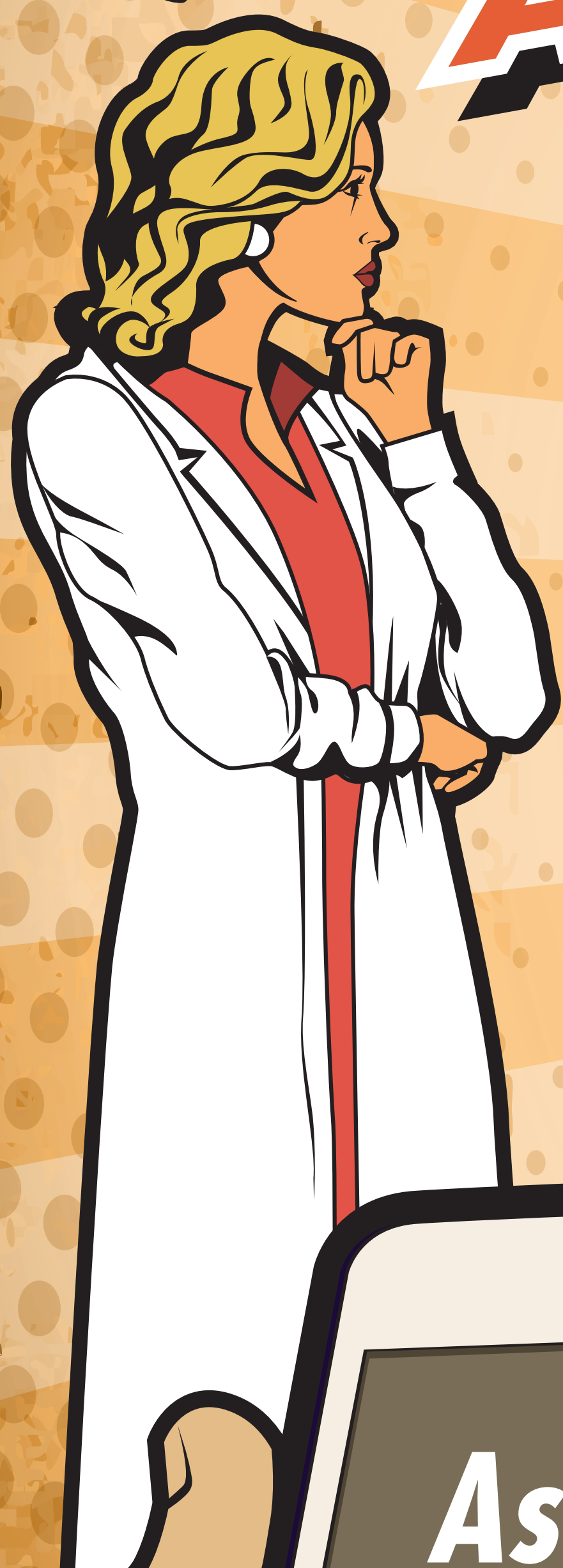
WHAT ANTIBIOTIC IS MOST APPROPRIATE?



Think before
you ink!

An original idea of the *Foundation for Biomedical Research* of *Hospital Universitario la Paz* | Madrid | Spain

WHAT ANTIBIOTIC IS MOST APPROPRIATE?



Ask
SHARx
Username: sligo
Passwrod: pass



Think before
you ink!

An original idea of the *Foundation for Biomedical Research* of *Hospital Universitario la Paz* | Madrid | Spain